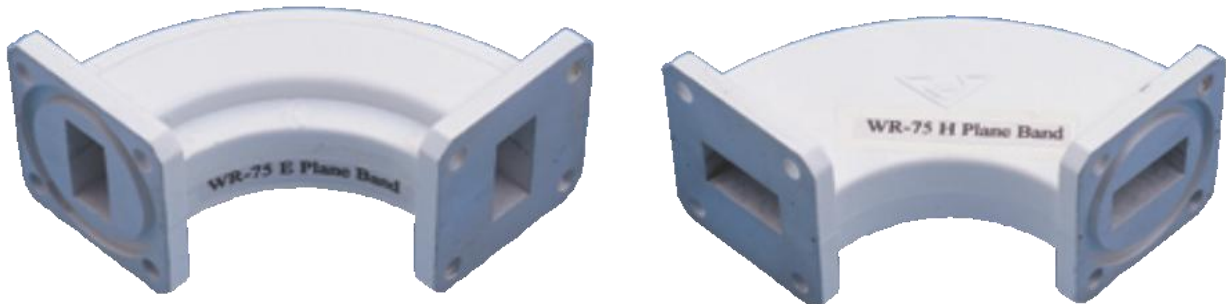


WR75 E-plane Waveguide Bend & WR75 H-plane Waveguide Bend

Part Number : 6156A001-1, 6156A005-1



SPECIFICATION :

1. FREQUENCY RANGES : 10.0-15.0
2. VSWR : 1.1 : 1
3. INSERTION LOSS : 0.15
4. Interface : WR75 Grooved, WR75 Cover

E-plane waveguide Bend (6156A001-1)

