



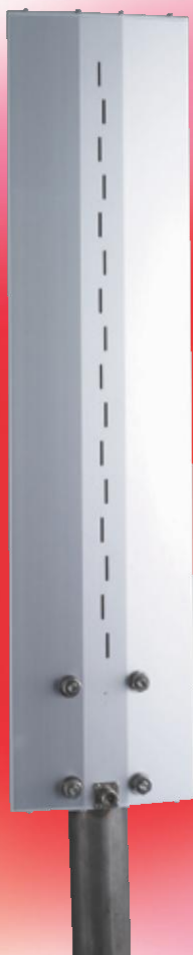
Can Be Designed and Manufactured  
to Customer Specifications

## Slot Array Antennas

2.4 GHz 30°  
Beamwidth



5.8 GHz Omni



5.8 GHz 10°  
Beamwidth



2.4 GHz 180°  
Beamwidth



### Features

- Designed for WLAN and Wireless Internet AP
- 180° and 360° coverage available
- Proprietary metal process for ruggedness
- Wind survivability to 125 miles per hour
- Easy field installation



## TECHNICAL SPECIFICATIONS:

Model	Frequency Band (GHz)	Beamwidth (degree)	Gain (dbi)	Polarization	VSWR	Dimensions (mm)
	5.8 GHz					
6369B		360°	13	Horizontal	1.5 : 1	803 x 192 x 38
6369A		180°	16	Horizontal	1.5 : 1	803 x 192 x 38
6378B		10°	23	H or V	1.3 : 1	308 x 316 x 40
	2.4 GHz					
6379A		30°	17	Horizontal	1.5 : 1	548 x 220 x 47
6379B		120° - 180°	13	Horizontal	1.5 : 1	638 x 220 x 247
	3.5 GHz					
6375A		360°	13	Horizontal	1.5 : 1	940 x 430 x 50
6375C		20°	18	H or V	1.5 : 1	310 x 250 x 55

### 5.8 GHz Slot Array Antenna (Model 6369B)

